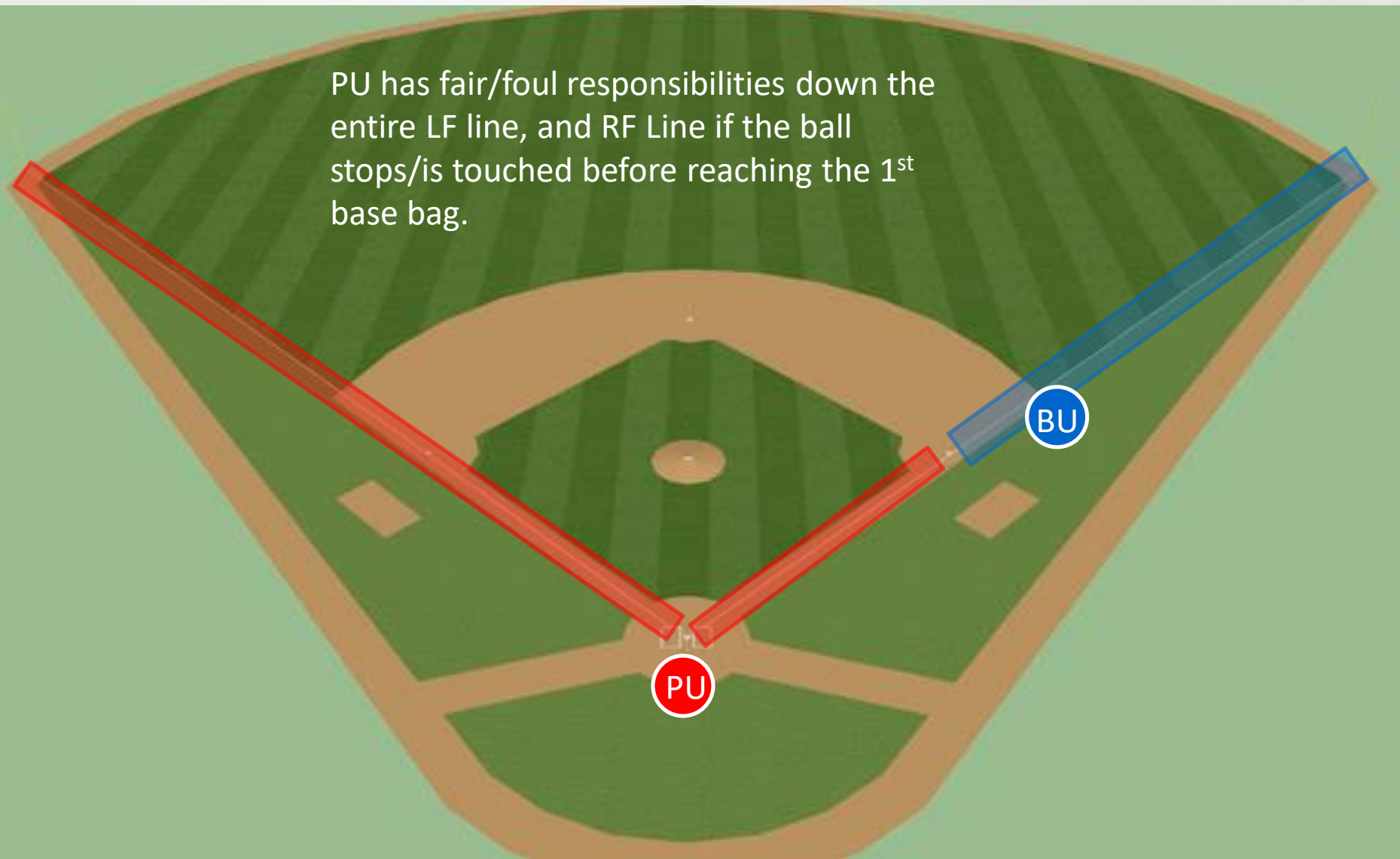


2 Person Umpire Mechanics



Your Logo

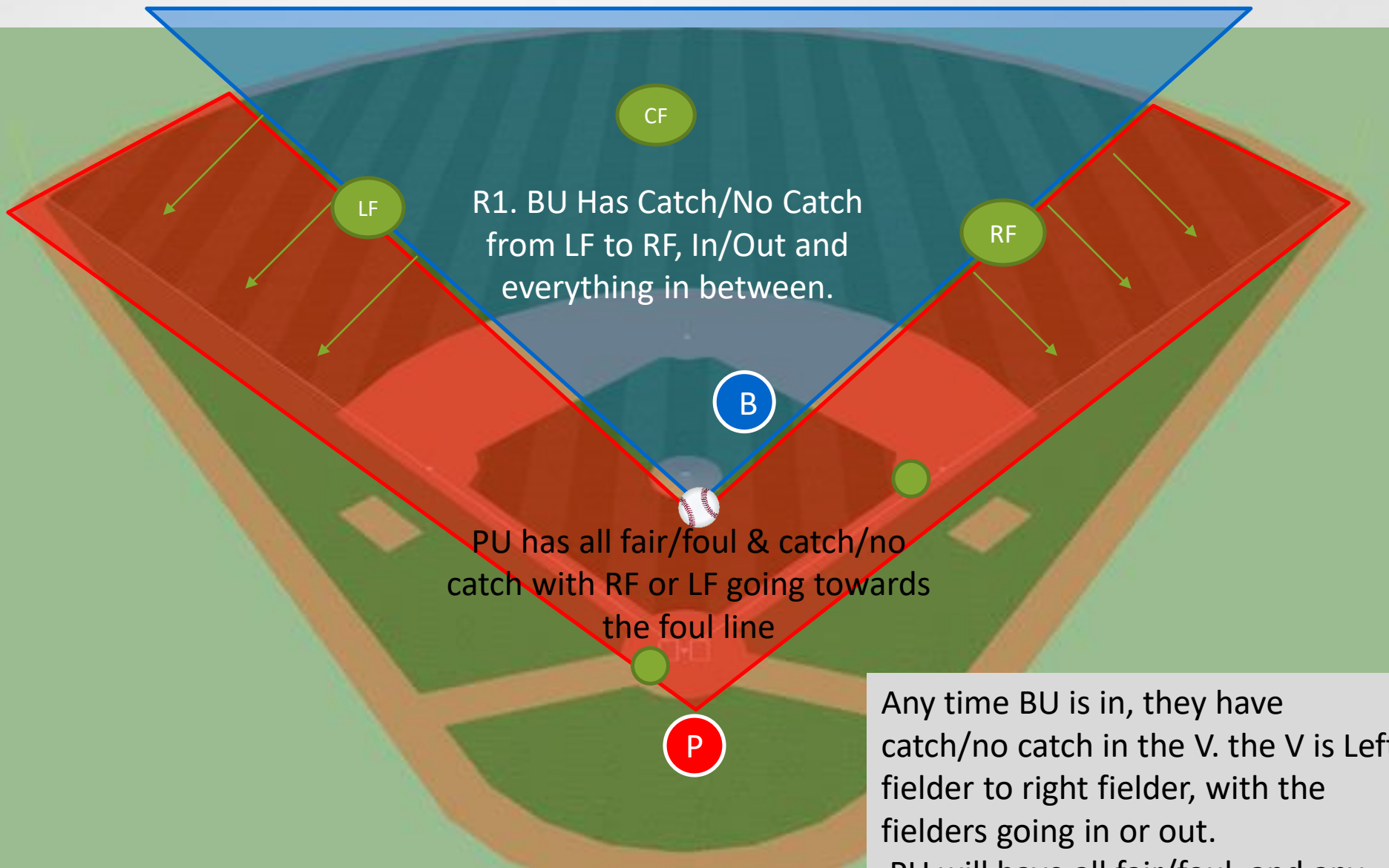
PU has fair/foul responsibilities down the entire LF line, and RF Line if the ball stops/is touched before reaching the 1st base bag.



No Runners, clean base hit,
Base Umpire has BR all the way
to 3rd.

B

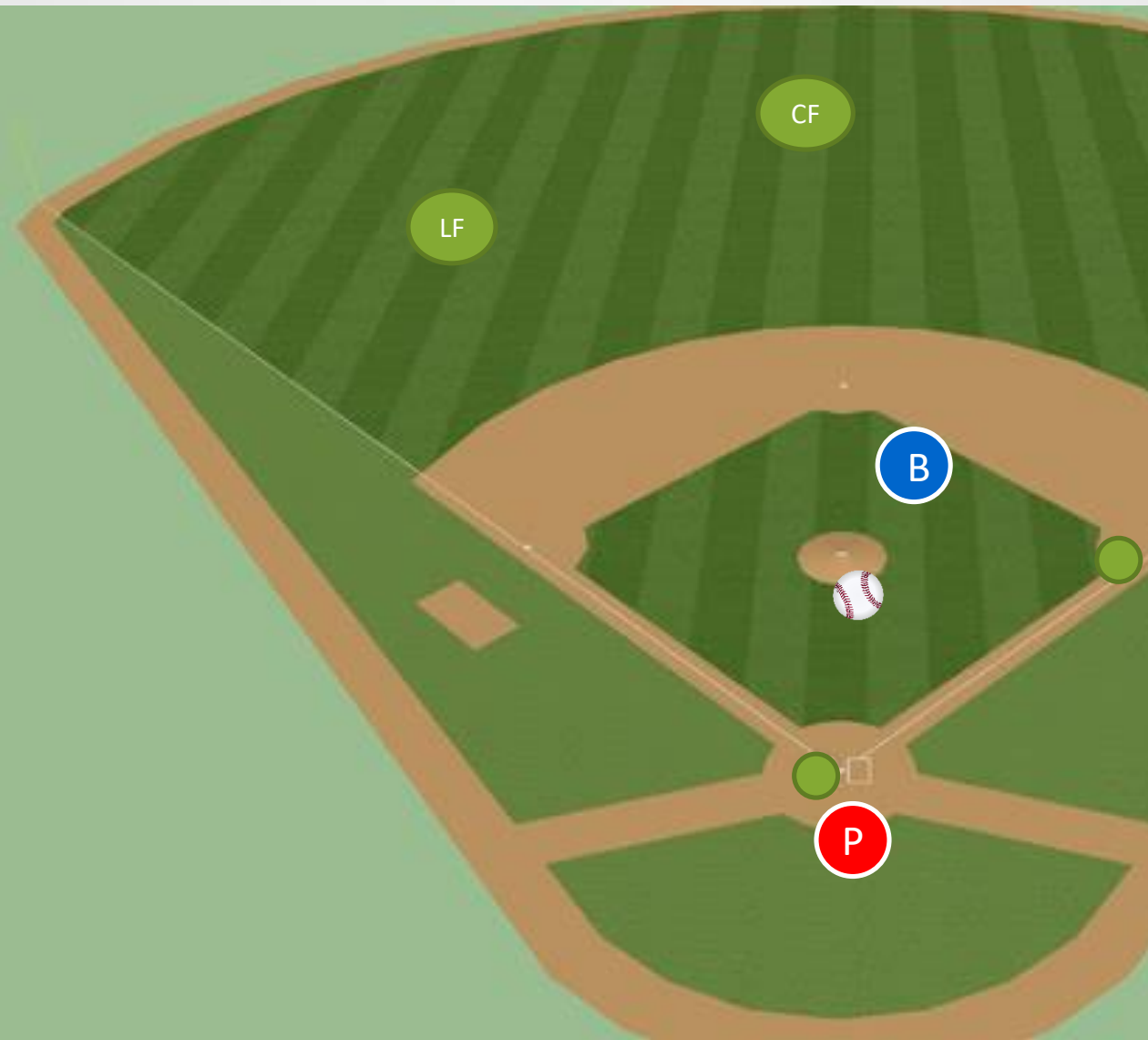
P



R1. BU Has Catch/No Catch from LF to RF, In/Out and everything in between.

PU has all fair/foul & catch/no catch with RF or LF going towards the foul line

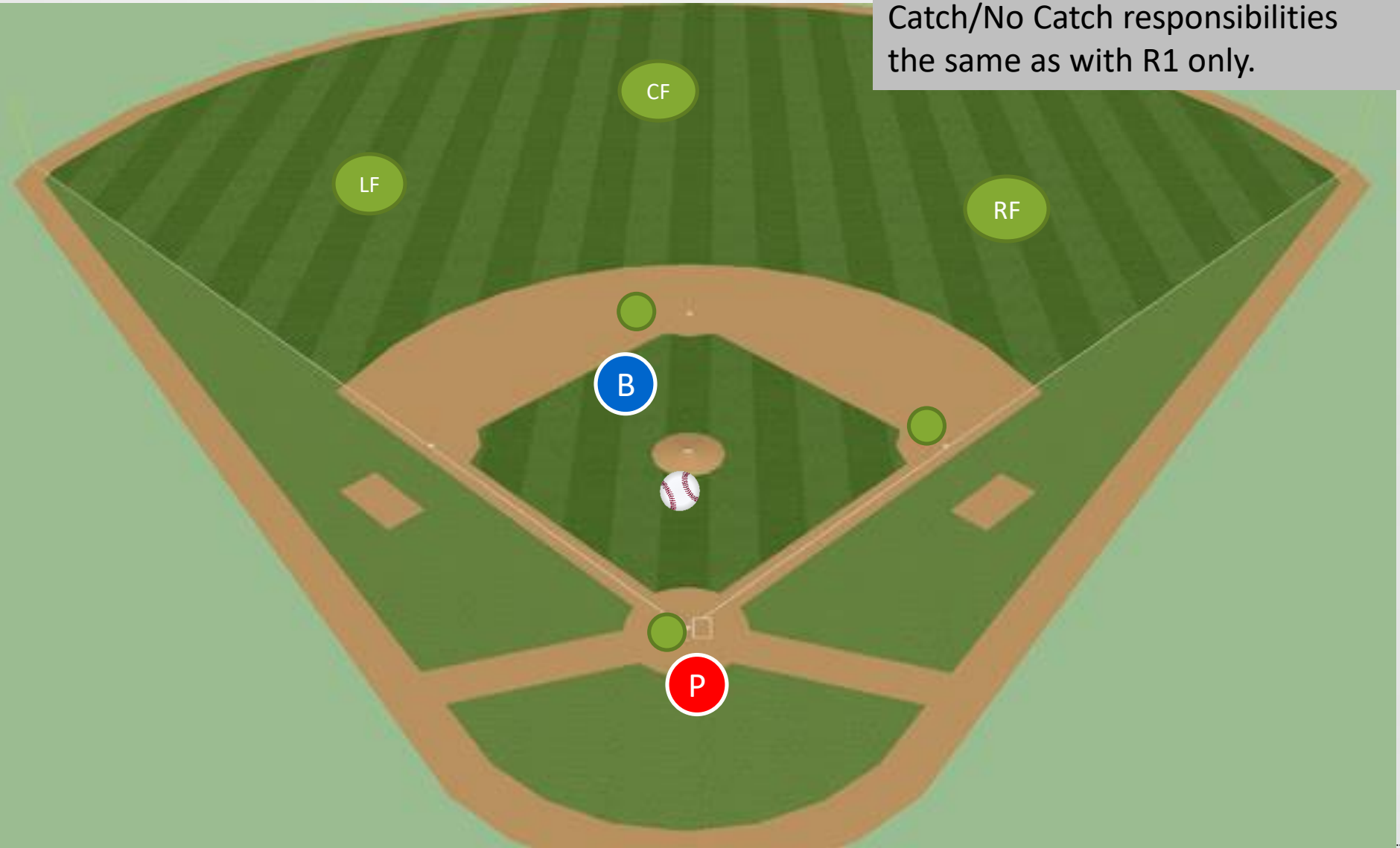
Any time BU is in, they have catch/no catch in the V. the V is Left fielder to right fielder, with the fielders going in or out.
PU will have all fair/foul, and any catch taking the RF or LF to the foul line.



On a clean base hit to the outfield, PU will take R1 into third, taking the play at the inside of the cutout. If R1 goes home, PU will have responsibility for a play at the plate.

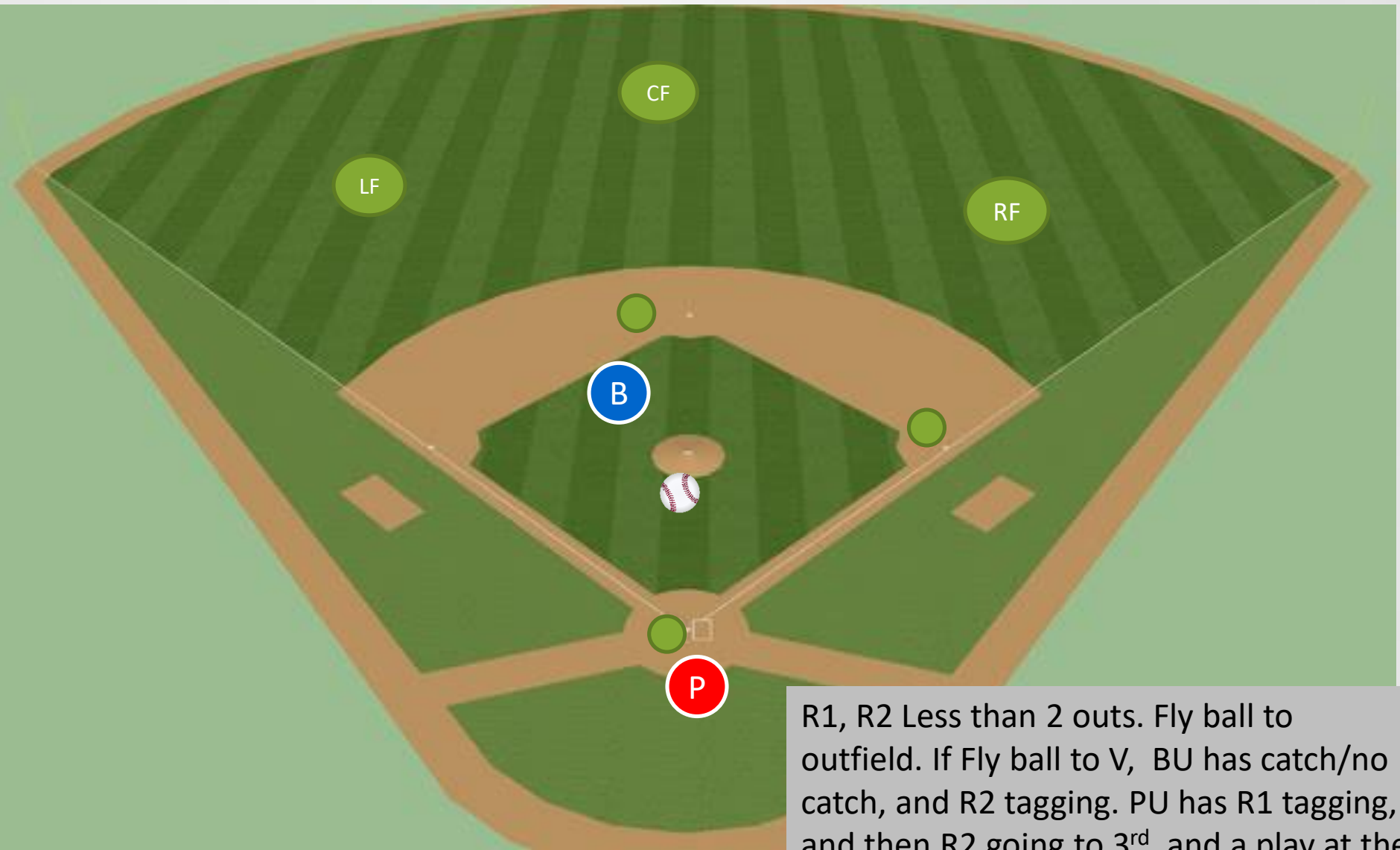
BU will have catch/no catch in the V, and then BR touch @ 1st and all the way around.

R1, R2. Less Than 2 outs= Infield Fly Situation. BU is in position C. Catch/No Catch responsibilities the same as with R1 only.



Your Logo

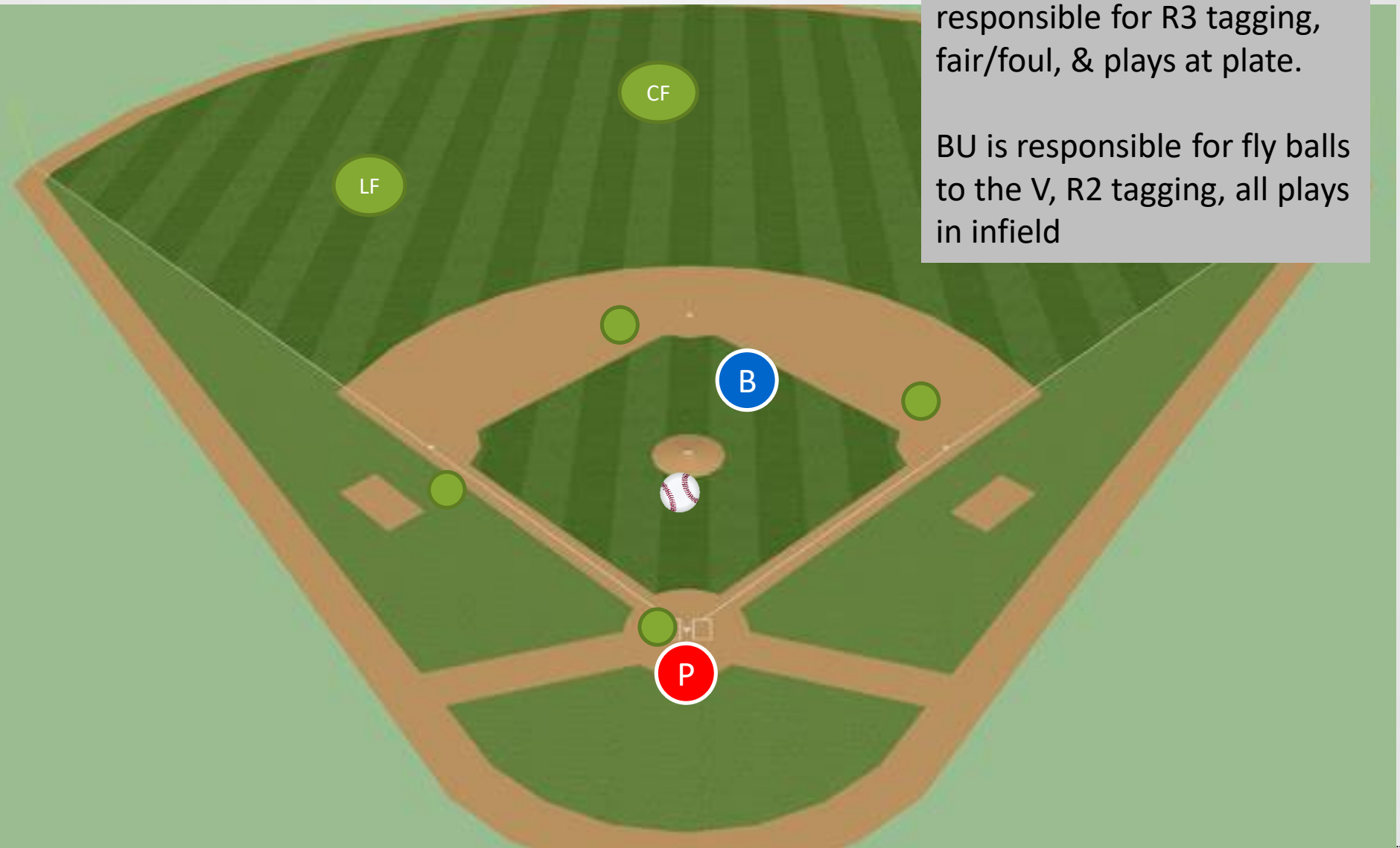




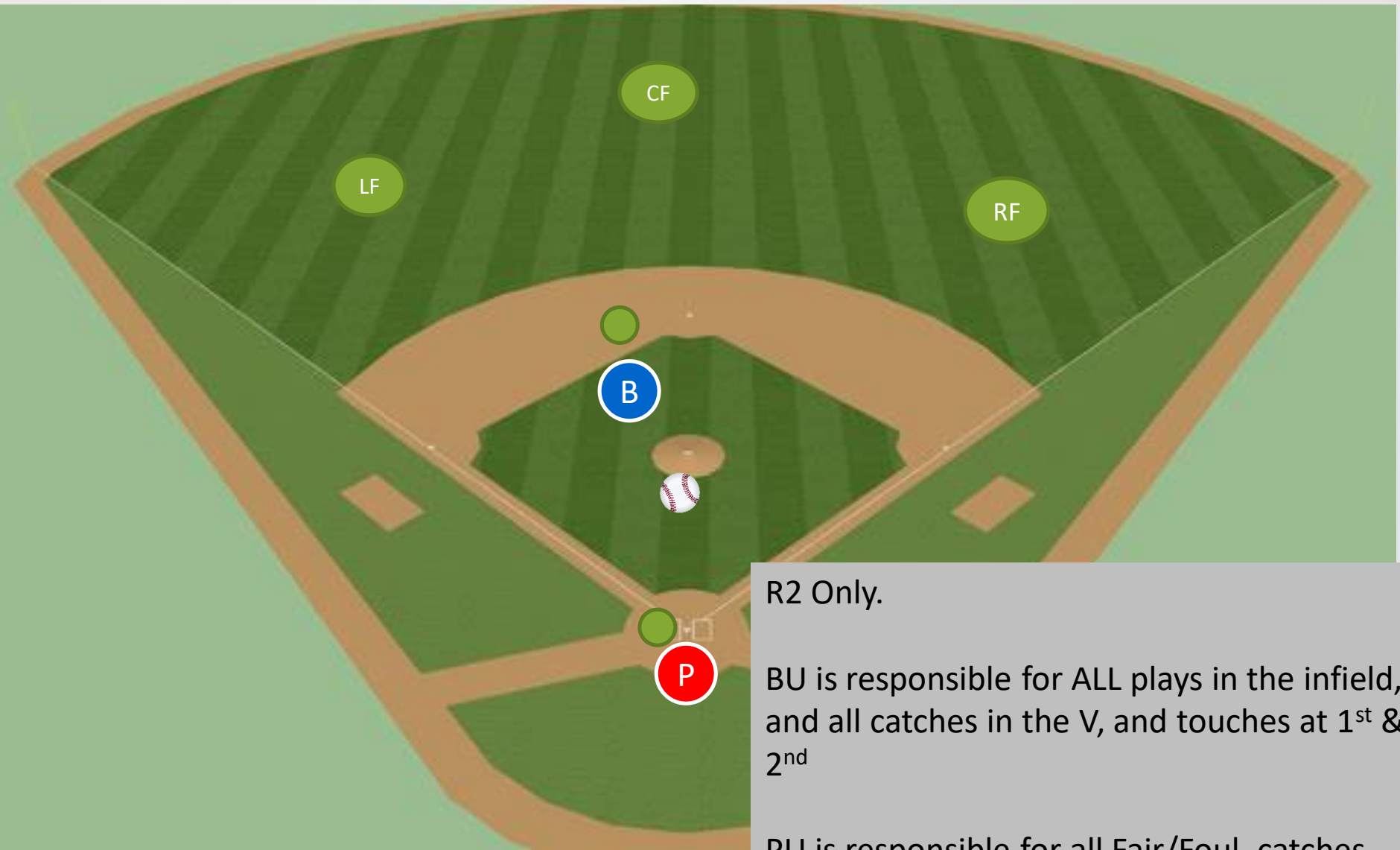
R1, R2 Less than 2 outs. Fly ball to outfield. If Fly ball to V, BU has catch/no catch, and R2 tagging. PU has R1 tagging, and then R2 going to 3rd, and a play at the plate. BU will take any play on R1.

Bases loaded, PU is responsible for R3 tagging, fair/foul, & plays at plate.

BU is responsible for fly balls to the V, R2 tagging, all plays in infield



Your Logo

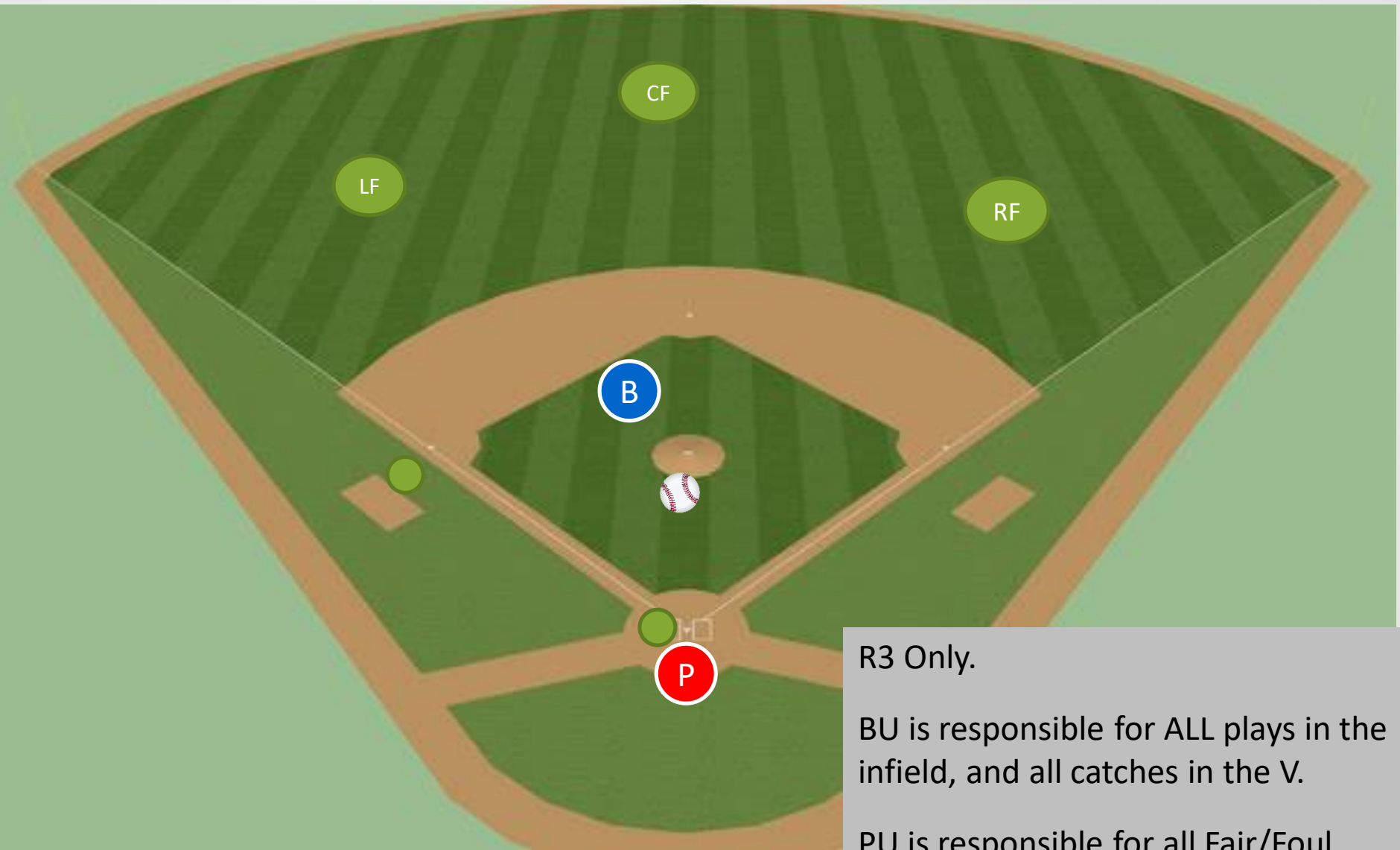


R2 Only.

BU is responsible for ALL plays in the infield, and all catches in the V, and touches at 1st & 2nd

PU is responsible for all Fair/Foul, catches taking RF and LF to the lines, and all plays at the plate. PU has touches at 3rd.



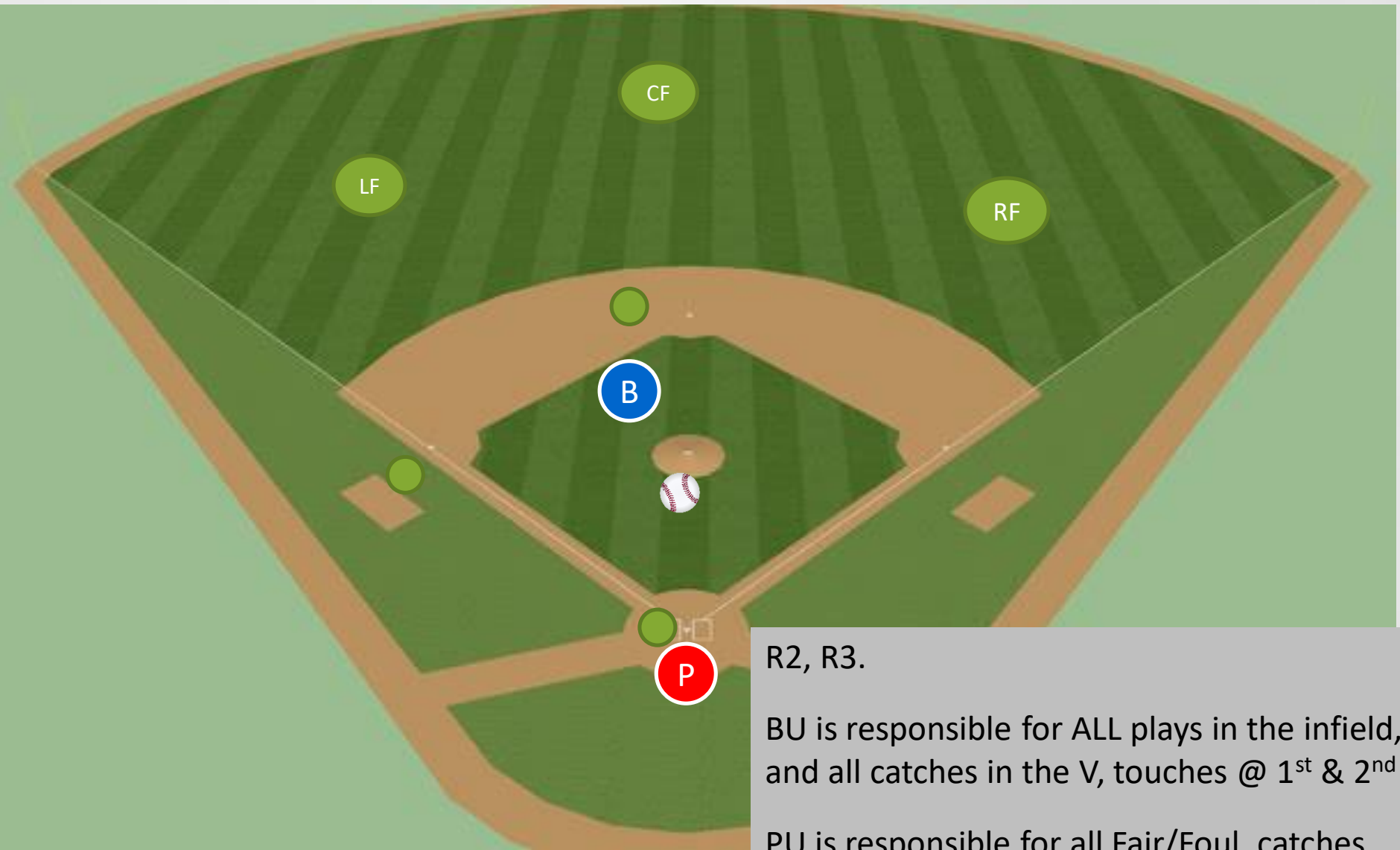


R3 Only.

BU is responsible for ALL plays in the infield, and all catches in the V.

PU is responsible for all Fair/Foul, catches taking RF and LF to the lines, R3 tagging, and all plays at the plate.





R2, R3.

BU is responsible for ALL plays in the infield, and all catches in the V, touches @ 1st & 2nd

PU is responsible for all Fair/Foul, catches taking RF and LF to the lines, R3 tagging, and all plays at the plate.

